

Contemporary



No. 67185a

# CAGE

## ORGAN<sup>2</sup>/ASLSP

Solo Organ / Orgel allein

SONDERAUSGABE FÜR HALBERSTADT  
JOHN-CAGE-ORGEL-KUNST-PROJEKT

## ORGAN<sup>2</sup>/ASLSP

*for Gerd Zacher*



New York City  
June, 1987

Distinct from *Aslsp*, all eight pieces are to be played. However, any one of them may be repeated, though not necessarily, and as in *Aslsp* the repetition may be placed anywhere in the series.

# ORGAN<sup>2</sup>/ASLSP

John Cage

1

System 1, measures 1-4. The notation is for a four-staff organ. The top staff (treble clef) has a whole note chord of G#4, A#4, B4. The second staff (treble clef) has a whole note chord of C5, D5, E5. The third staff (bass clef) has a whole note chord of F#3, G#3, A3. The bottom staff (bass clef) has a whole note chord of C4, D4, E4. The notes are sustained throughout the four measures.

System 1, measures 5-8. The notation is for a four-staff organ. The top staff (treble clef) has a whole note chord of G#4, A#4, B4. The second staff (treble clef) has a whole note chord of C5, D5, E5. The third staff (bass clef) has a whole note chord of F#3, G#3, A3. The bottom staff (bass clef) has a whole note chord of C4, D4, E4. The notes are sustained throughout the four measures.

2

System 2, measures 1-4. The notation is for a four-staff organ. The top staff (treble clef) has a whole note chord of G#4, A#4, B4. The second staff (treble clef) has a whole note chord of C5, D5, E5. The third staff (bass clef) has a whole note chord of F#3, G#3, A3. The bottom staff (bass clef) has a whole note chord of C4, D4, E4. The notes are sustained throughout the four measures.

System 2, measures 5-8. The notation is for a four-staff organ. The top staff (treble clef) has a whole note chord of G#4, A#4, B4. The second staff (treble clef) has a whole note chord of C5, D5, E5. The third staff (bass clef) has a whole note chord of F#3, G#3, A3. The bottom staff (bass clef) has a whole note chord of C4, D4, E4. The notes are sustained throughout the four measures.

3

System 3, measures 1-4. The notation is for a four-staff organ. The top staff (treble clef) has a whole note chord of G#4, A#4, B4. The second staff (treble clef) has a whole note chord of C5, D5, E5. The third staff (bass clef) has a whole note chord of F#3, G#3, A3. The bottom staff (bass clef) has a whole note chord of C4, D4, E4. The notes are sustained throughout the four measures.

System 3, measures 5-8. The notation is for a four-staff organ. The top staff (treble clef) has a whole note chord of G#4, A#4, B4. The second staff (treble clef) has a whole note chord of C5, D5, E5. The third staff (bass clef) has a whole note chord of F#3, G#3, A3. The bottom staff (bass clef) has a whole note chord of C4, D4, E4. The notes are sustained throughout the four measures.

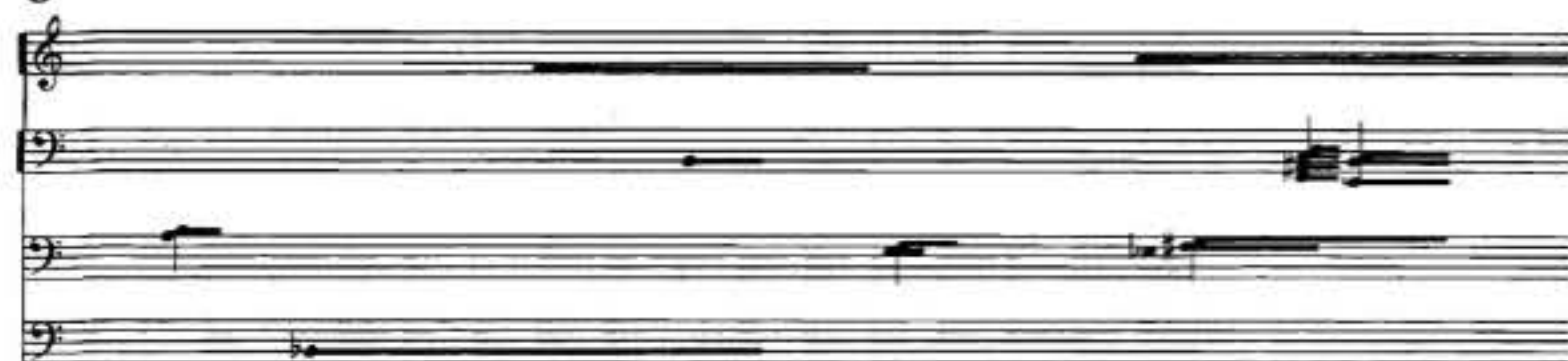
4

System 4, measures 1-4. The notation is for a four-staff organ. The top staff (treble clef) has a whole note chord of G#4, A#4, B4. The second staff (treble clef) has a whole note chord of C5, D5, E5. The third staff (bass clef) has a whole note chord of F#3, G#3, A3. The bottom staff (bass clef) has a whole note chord of C4, D4, E4. The notes are sustained throughout the four measures.

System 4, measures 5-8. The notation is for a four-staff organ. The top staff (treble clef) has a whole note chord of G#4, A#4, B4. The second staff (treble clef) has a whole note chord of C5, D5, E5. The third staff (bass clef) has a whole note chord of F#3, G#3, A3. The bottom staff (bass clef) has a whole note chord of C4, D4, E4. The notes are sustained throughout the four measures.



5



7



8

